



SNOW POLES

Out of plastic or wood



Snow poles and marking bars made by Beilharz make an important contribution for the safety on snowy roads and reduced sight by fog or precipitation. The snow pole is primarily being used where the road course cannot be marked by the delineators due to high snow cover. To ensure a

continuous guideline the Beilharz snow poles can be inserted as a single system directly into the ground or combined with the delineator.

Quality

Snow poles manufactured by Beilharz are made of especially developed extremely UV- and cold-resistant special plastic. The special characteristic of this snow pole, which is made in one piece, is the very high deformation resistance with concurrent impact strength. Thus strains of 50 newton metres for a period of 3 minutes are possible without remaining distortion. This means the snow pole made out of special plastic is also way more stable than the other on the market available snow poles with an integrated cross profile. These characteristics lift off the Beilharz snow pole from other commercial snow pole systems made out of plastic.

In addition the snow poles can remain installed year-round due to their water resistance as well as their UV- and ozone resistance; thus they can also be used in summer as marking bars. Due to the material characteristics a rotting of the snow poles is impossible, any maintenance or revision is not necessary. Of course, after its use the used material can be recycled together with our delineators to 100 %.



Standard length:

Our snow poles made out of plastic are available in the following length: 1.00 m/ 1.25 m/1.50 m/2.00 m and 2.50 m. Of course we produce every special length by request.

1 Snow pole made out of plastic with/ without special foil.

2 Snow poles made out of wood are coloured black/orange-yellow – starts on top with black painted colour.

3 During light irradiation the special foil appears in white-silver.



TYPES OF SNOW POLES

■ Type 1: without reflex foil

- Snow pole continuous orange
- Diameter 50 mm
- Thickness approx. 3 mm
- Opened on top
- Optionally available with impact resistant cover cap on top



■ Type 2: with reflex foil

- Snow pole continuous orange with black reflex foil (30 cm) and impact resistant cover cap on top
- Optimal reflexion of the light by circulating reflex foil
- Diameter 50 mm
- Thickness approx. 3 mm



Within this variant a special reflex foil is being used, which appears black at daylight. Through light irradiation at night the foil reflects the light of the vehicle and appears in silver-white. By these special characteristics the snow pole is well visible both at day and night and therefore an optimal guidance function for the road users and clearing services is ensured.

Configuration options

The before mentioned variants are both available without any tip, with a skew tip or with a completely closed cone tip. All three options are also suited for the admission into a delineator. In addition you can equip the snow pole with a cover cap to prevent from dirt or impacts.

TYPES

■ Completely closed cone tip

- Max. diameter 50 mm
- Easy hammering into the ground
- Cone tip re-usable
- No accumulating of dirt in the snow pole



■ Skewed tip

- Snow pole tapered at an angle of 25°
- Easy hammering into the ground
- In case of damage further tapering possible



■ Ground sleeve made of plastic

For quick inserting of snow poles. The ground sleeve is being mounted directly into the ground or in a concrete foundation e.g. at traffic refuges or parking areas.

- 430 mm overall length
- Bore diameter approx. 54 mm fitting for pole diameter up to 52 mm
- Automatic lid clip coloured in red



■ Ground sleeve made of steel

For quick inserting of snow poles. The ground sleeve is being mounted directly into the ground or in a concrete foundation e.g. at traffic refuges or parking areas.

- Hot-dip galvanized
- 300 mm overall length
- Bore diameter approx. 52 mm fitting for pole diameter up to 52 mm
- Optional available with cover cap
- Optional available with fixing screw for snow pole



■ Stand-bracket steel for snow poles

For quick inserting of snow poles. The stand-bracket is being mounted by hammering directly into the ground.

- Round steel hot-dip galvanized Ø 15 mm
- 2 x round pipe with inner diameter 51 mm
- 1,200 mm overall length



■ Cover cap made of special plastic

- Impact-resistant, black cover cap
- Form-locking and accurately fitting
- When equipped with reflective foil included

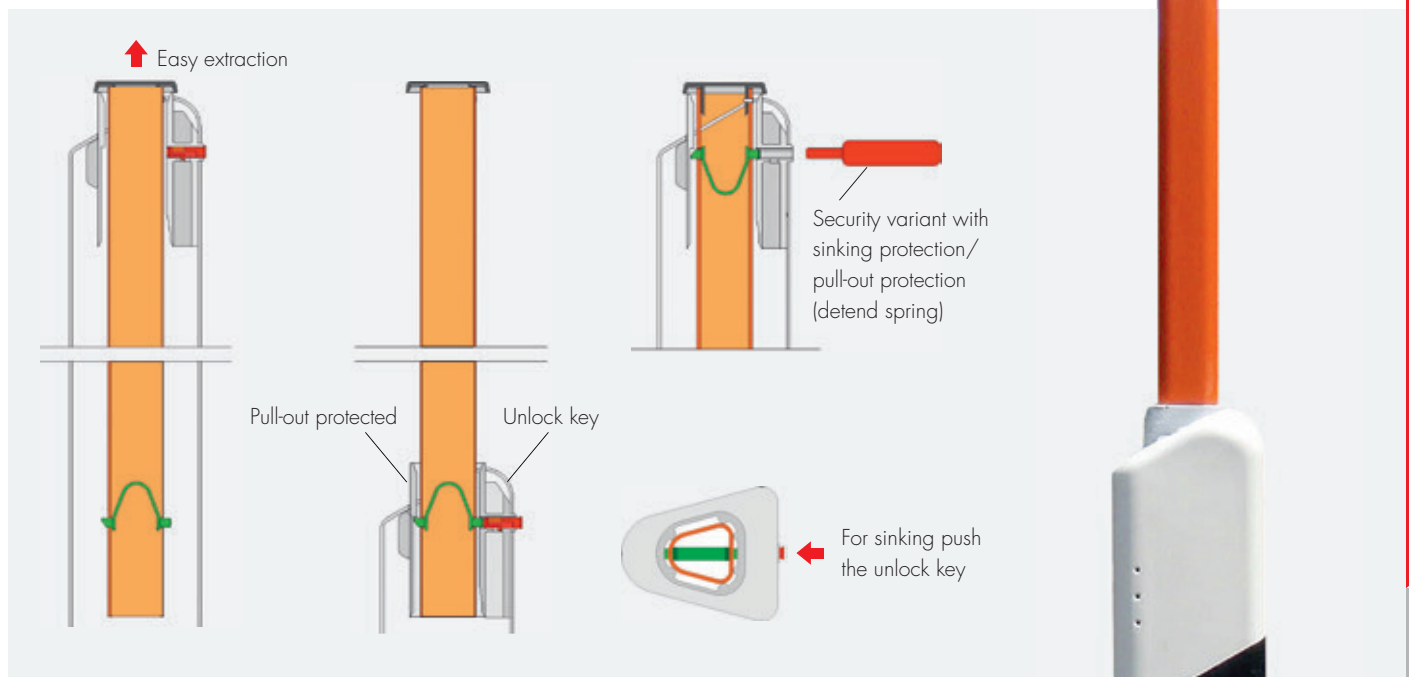


Delineator with triangular snow pole

The blow-molded, one-piece delineator has already a firmly integrated triangular snow pole which is made of extremely rugged special plastic. The snow pole is simply being pulled out when needed and automatically locks in place. By activating the unlock key the snow pole can be simply and quickly sunk inside the delineator.

Your benefits at a glance:

- Triangular snow pole of equal form like the delineator: thanks to the equal form of the snow pole and the delineator the reflectors of the delineator and the snow pole both have the same angle. Therefore a uniform reflection is granted. The stable form of the triangular snow pole eliminates an unwanted rotation of the snow pole.
- Integrated unlock key: by activating the unlock key the snow pole can be sunk into the delineator quickly – the unlock key is very easy to activate even with work gloves on.
- Internal guiding fixture: The delineator is being blow molded in one piece and the guiding fixture of the snow pole is firmly integrated. There are no further add-on parts necessary, thus the unaltered visual appearance of the delineator is granted.
- Integrated pull-out protection: the snow pole can be pulled out up to the arrester and therefore can't be stolen by unauthorised persons without use of force.



The function at a glance

- To extract the triangular snow pole just pull it out of the delineator. The snow pole automatically locks into place and is therefore both pull-out- and theft-protected.
- The delineator-integrated guiding fixture for the snow pole is equipped with an integrated unlock key. The guiding fixture has a 6-point-alignment as well as several reinforcing struts for an even higher stability.
- By pushing the unlock key the snow pole can be sunk into the delineator.
- Within the security variant (additional detent spring) the extracting or sinking of the snow pole is only possible by using a special key.



Current information available at:
www.beilharz.eu



Beilharz GmbH & Co. KG
Rosenfelder Straße 100
72189 Vöhringen

Phone +49 7454 9588-0
Fax +49 7454 9588-99

info@beilharz.eu